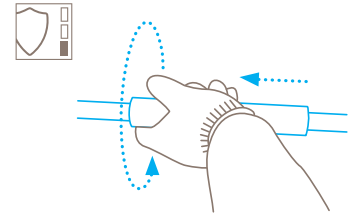


TECHNICAL DATA SHEET

SECUNORM 590 NO. 590001

Safety technology



Automatic blade retraction – a high degree of safety

The SECUNORM 590 features automatic blade retraction. As soon as you move back the blade engaging element to the initial position, the blade will retract into the cutting head. And stay there. Giving you a high level of safety from cut injuries.



VERY LONG SAFETY KNIFE WITH AUTOMATIC BLADE RETRACTION, ESPECIALLY FOR OPENING BIG BAGS.

Order No. 590001.02

A small step to achieve great things.

Flexible big bags are increasingly used in various types of industries. Despite the many advantages, there is one main problem when working with flexible big bags: how cut open those heavy-weight bags without the contents spilling over you? The solution is... by using this innovation from MARTOR. The SECUNORM 590 is specifically designed for cutting big bags. Additionally, it has various thought-through features, such as the extra-long handle and the automatic blade retraction. To help you work safely.

Extra long handle

With the exact length of 100 cm it is guaranteed that you can always cut from a safe distance - without having to place your arm or head in the danger zone below the big bag. The eyelet can be used to fasten the knife.

Dirt resistant

Very few people work in a sterile environment. No problem for the SECUNORM 590. For example, the exchangeable dirt

control device ensures that less dust and other foreign objects get into the cutting head.

Robust construction

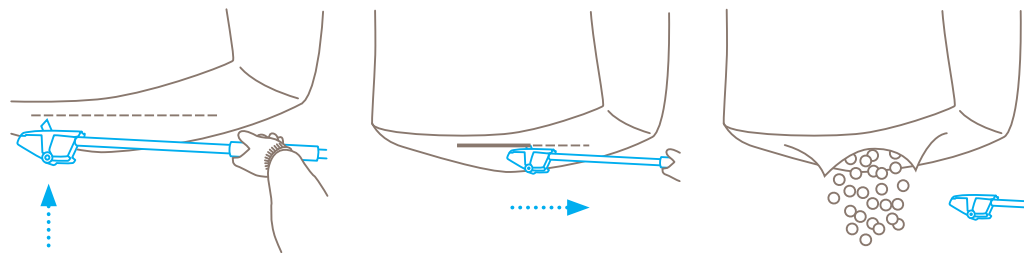
The middle element is made of stainless steel; all other components are made of a particularly hard plastic. Protection caps on the cutting head and stainless secured screws also contribute to durability and high weather resistance.

Left and right handed

With the left hand or the right? Actually with both! You will need both hands to use the SECUNORM 590. Decide for yourself which hand to use to turn the blade-engaging element, and which hand to use for stabilising. A comfortable grip is the goal.

To cut like new again

Your cutting tool will be exposed to extreme stress. It is, therefore, all the better that you can easily replace the key components. For example, the complete cutting head. Or just a part of it, such as the stainless steel blade or the dirt control device.



PRODUCT FEATURES

Technical features



High safety



Blade change with tool



Abrasion resistant



Ergonomic



Extended blade length



Cutting depth



Lanyard hole



For right and left hander



Heavy-duty



stainless

Main cutting materials



Bagged goods

Installed blade



NO. 17940

0.50 mm, 71,2 mm long, stainless

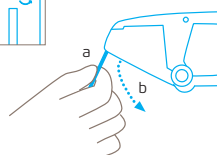
Optional blade



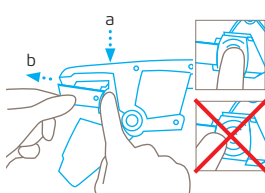
NO. 7940

0.50 mm, 71,2 mm long

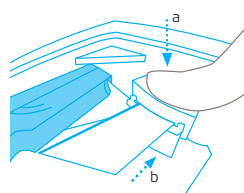
BLADE CHANGE



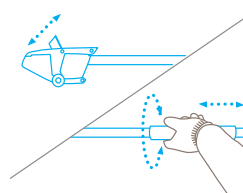
After removing the protective cap **unscrew the screw** on the blade cover (a). Then swivel the cover in a **downwards direction** and open fully (b).



Now push the **centre (a)** of the blade holder (**within the cross-hatched area**) and remove the blade with the other hand **simultaneously** (b).



In order to insert a **new blade** press the centre of the blade holder again (a). At once push the blade into the blade holder until the **hole formation can no longer be seen** (b).



After successfully changing the blade, please check whether the **release and retraction** of the blade is functioning properly.

SERVICES OFFERED



Safety poster



Training video



Technical data sheet



Consulting service

PRODUCT AND PACKAGING DETAILS

Order No.	NO. 590001.02	Packaging unit	1 in single unit box
Knife size (L x W x H)	1000 x 144 x 43 mm	Size Single unit box	1035 x 160 x 54 mm
Weight knife	939.0 g	Weight single unit box	1676.5 g
Basic material	Glass fibre reinforced plastic	EAN Code single unit box	4002632921858
Extended blade length	29 mm	Quantity in outer pack	-
Cutting depth	24 mm	Weight outer pack	650.0 g
		Customs tariff number	82119300

SAFETY CERTIFICATE

Date of issue	15.10.2014
Certification	GS certificate NO. S 60096614

Certificates and awards



SECURITY ADVICE

To ensure that you use your new MARTOR knife safely and most effectively, please read and note the following user-instructions. Please keep the written guide in a safe place so that you can access it at any time.

1. General application instructions: Please use the product carefully for cutting work only and not for any purposes other than those that are intended. Please take the correct handling and the proper use of the knives into account in this regard.

2. Special application instructions to avoid the danger of injuries: Only use knives that are in perfect condition and have sharp, clean and undamaged blades. Employ the utmost care when handling the knives. **Caution: The blade is sharp and can result in serious and deep cuts. Therefore, never reach into the blade!**

3. Replacement of spare parts: Replace any blades that become dull at the right time! Use only the replacement blades available at MARTOR for this purpose. Dispose of old blades in a proper fashion, ideally in the USED BLADE CONTAINER by MARTOR (NO. 9810.06). They should not be placed in a rubbish bin, as this poses a considerable danger of injuries.

4. If the blade engaging element does not function properly, contact MARTOR directly. Under no circumstances should you open it yourself and make changes as this would mean that there is no guarantee of the product's safety. If necessary, replace all of the other replacement parts exactly as specified in the instructions.

5. Non-use of the knife: Always secure the blade in such a way that injuries due to cuts are excluded. Store the knife in a secure place.

6. Always keep the knife as clean as possible and do not expose it to unnecessary humidity to safeguard a long service life.

No liability will be assumed for consequential losses. Subject to technical changes and errors! This knife does not belong in the hands of children!

ACCESSORIES

WALL MOUNT BRACKET SECUNORM 590

NO. 9596



The wall mount bracket is the ideal place to hang up your SECUNORM 590 safely at your workplace. Depending on the local conditions, you can attach the wall mount bracket to a suitable wall using the enclosed screws and dowels or attach it to a rod using a cable tie.

HEXALOBULAR SCREW-DRIVER SECUNORM 590

NO. 9594



This offset screwdriver is a custom product for the SECUNORM 590. With the hexalobular socket on the one side you can unscrew and tighten the secured screws of the cutting tool. The slotted screwdriver on the other side helps you to remove the protective caps.

USED BLADE CONTAINER

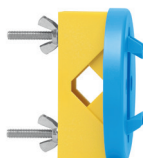
NO. 9810



You can fill the USED BLADE CONTAINER with the content of your SAFEBOX. Or directly with your used blades. When the box is full, turn the lid until it shuts. Now the box cannot be reopened. The next step is to safely and completely dispose of the filled USED BLADE CONTAINER.

WALL MOUNT BRACKET USED BLADE CONTAINER

NO. 9845



Include it in your order now! With this mounting bracket you can fix your USED BLADE CONTAINER to a central location. Use the clamp and screws and nuts supplied with the product to attach it to either a pipe or a rod.

MANUFACTURER

MARTOR KG | Heider Hof 60 | 42653 Solingen | Germany
T +49 212 25805-0 | F +49 212 25805-55 | info@martor.de | www.martor.com